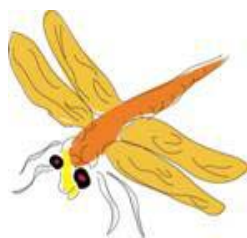


Visit loudounwatershedwatch.org



Loudoun Watershed Watch would like to thank Harper Park Middle School, Principal Mr William S. Shipp, Science Teacher Helen de Groot, the Ecology Club and the entire staff for their help and support for this event.



Exhibits provided by:

- Department of Conservation and Recreation Potomac Watershed Office
- Leesburg Environmental Advisory Commission
- Loudoun Wildlife Conservancy
- Poster, Poem & Essay Contest Award Ceremony at noon
- US Environmental Protection Agency

Outdoor Activity Stations provided by:

- Audubon Naturalist Society
- Loudoun County Department of General Services
- Loudoun County Environmental Planning Dept.
- Loudoun County Sanitation Authority
- Loudoun Soil and Water Conservation District
- Loudoun Watershed Watch
- Loudoun Wildlife Conservancy
- Piedmont Environmental Council
- Harper Park Middle School Environmental Club

LOUDOUN WATERSHED WATCH PRESENTS
An X-Stream-ly Awesome Educational Program for All

Saturday, October 20, 2007
10:00–3:00 p.m.
Hosted by Harper Park Middle School
701 Potomac Station Drive, Leesburg, VA

FAMILY STREAM DAY
STREAMS—DISCOVER THE HIDDEN TREASURES

Contest Award Ceremony at Noon

PassBook Holder's Name

Celebrate World Water Monitoring Day

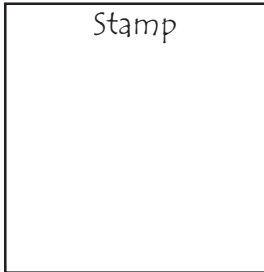
Station 1: Your Watershed Address

by: Piedmont Environmental Council

www.pecva.org

What is a watershed? Do you know your “watershed address?” Check out the watershed maps of Loudoun County and mark your address with a pin. Local streams carry runoff to the Potomac River and Chesapeake Bay. Discover what you can do to protect Loudoun's streams.

Pick up information on how you can help and get involved!



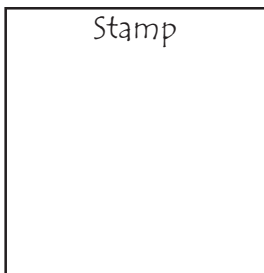
Station 2: To Fertilize or Not to Fertilize

by: Loudoun County General Services

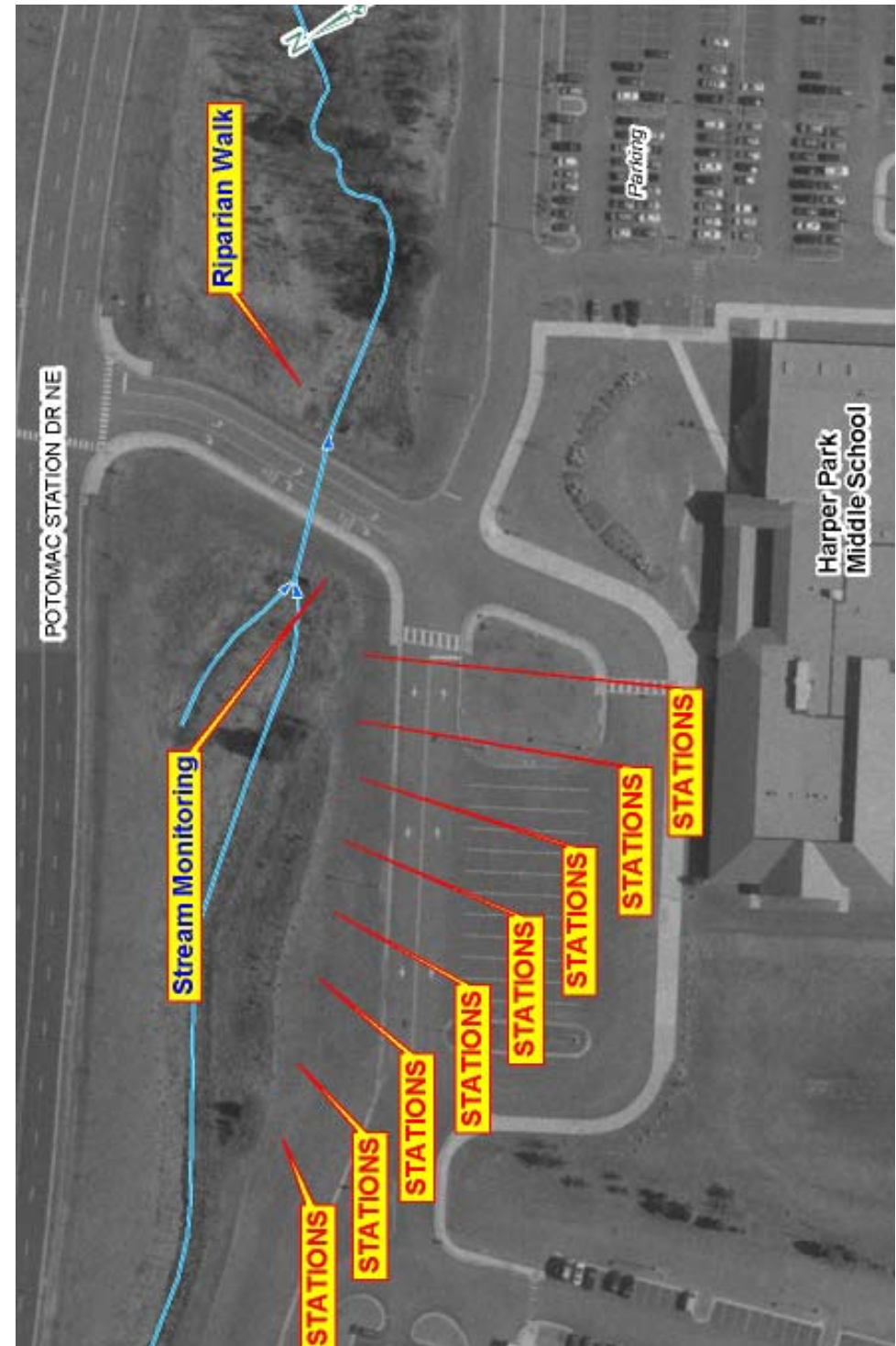
www.loudoun.gov/genserv/stormwater

Soil, fertilizer and mulch are just a few of the things we invest in for an attractive yard and garden. But when and how often should these chemicals be applied to our lawn and garden? What is the first thing to do for a greener lawn or should we just let the professionals do it and forget all about it?

Get these questions answered and test your know how when you visit the Department of General Services Display. You never know what you could win! Help Mom and Dad get started on a 'crab' friendly lawn and garden.



Harper Park Middle School - Site Map



Station 8: Wetland Habitat Display

by: Loudoun Soil and Water Conservation District
<http://loudounvaswcd.org>

Plants and animals of a wetland habitat are unique. Learn how important a streamside forest buffer is to the quality of a community's water. Discover the natural life within the urban stream corridor. Identify local trees and shrubs and define their functions. Find out about the Riparian Buffer and how it works for you.

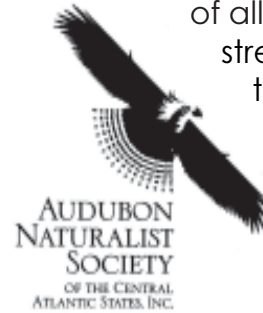
Stamp



Station 3: Nature Crafts and Games

by: Audubon Naturalist Society - Rust Sanctuary
www.audubonnaturalist.org

Come enjoy stream critter activities and crafts. Make an aquatic food chain or fun frog hat to wear. Children of all ages can play water and stream games to learn about the life styles of water insects.



Stamp

Station 9: Young Ecologists Lead the Way

by: Harper Park Middle School Ecology Club
<http://cmsweb1.loudoun.k12.va.us/hpms/site/default.asp>

The Harper Park Ecology Club is anxious to help you learn more about water conservation and water quality and streams. Come make a button about water conservation and water quality that you can wear to help others learn.

Want to reduce your impacts? The students will help you learn through their exhibit and fun activities!

Stamp



Station 4: Nature's Filters

by: Loudoun County Environmental Program
www.loudoun.gov/planning

Nature provides natural filters that help clean rainwater before it flows into our streams, ponds, lakes, and rivers. Wetlands are one of nature's most efficient filters. Acting almost like a sponge Wetlands absorb pollutants and excess nutrients that could harm stream ecology and water quality. Learn to identify a wetland and how it helps to keep our streams clean while providing a home to specially-adapted plants and wildlife. Simulate the effects of a wetland in an interactive model watershed. Identify soils, plants, and wildlife that typically occur in wetlands.



Stamp

Station 5: Drain Dump Stumper

by: Loudoun County Sanitation Authority
www.lcsa.org

Are You Poisoning Your Water? Play the Drain Dump Stumper Game.

The most common and likely cause of water supply contamination comes from the daily, collective effects of thousands of well-meaning consumers who dump dangerous materials down their drains. Try your luck at the Drain Dump Stumper Card Game and learn which items are safe for the drain and which are not.

Stamp



Station 7: What's Buggin' Our Streams

by: Loudoun Wildlife Conservancy
www.loudounwildlife.org & www.loudounwatershedwatch.org

Aquatic insects live in streams under rocks and provide food for fish, turtles and frogs. Lots of insects mean a healthy stream. Loudoun Wildlife Conservancy and Loudoun Watershed Watch monitor aquatic insects and other water quality indicators throughout Loudoun County. Come see live aquatic insects and test for water quality. Learn how volunteers monitor streams and coordinate

their results with county government and the Virginia Department of Environmental Quality.



Stamp

Station 6: Erosion & Sediment Control

by: Loudoun County Building and Development
www.loudoun.gov/b&d/erosion.htm

Sediment is the # 1 pollutant of surface water and greatly affects our water quality. Learn how the County is preserving and protecting our water resources and the Chesapeake Bay, also learn how citizens impact water quality and the everyday things you can do to help.

Stamp



Scheduled Nature Walks

by: Loudoun Wildlife Conservancy
www.loudounwildlife.org

Take a short walk to explore nature in the forest and wetland areas. Discuss the native plants and animals that might be found in a wetland habitat. Find out how important they are and how they impact our water quality.

Nature Walks Depart
from Station 7 at
10:15 AM
11:15 AM
1:15 PM
2:15 PM



Extra Credit
Stamp