

Other Activities

Guided Meadow Walk, 10:45 am and 1:30 pm

Meadows are an integral part of floodplain and stream corridor habitat. Grasses, rushes, reeds, sedges and other flowering plants filter water and create a rich habitat for animal life. Come discover the role of meadows in valuable stream ecosystems and learn what has been done to protect them in Loudoun County.

Guided Tree Walk, 10:45 am and 1:30 pm

All trees are important for cycling necessary oxygen, carbon dioxide and water. Trees along streams and rivers are critical for chemical cycling as well as soil stabilization, temperature regulation and water retention. It is very important to know what trees are best suited for these jobs, and to understand why trees make the earth livable for us, so join us for an exciting look at our local trees.

Exhibitors Inside the Library

- Audubon Naturalist Society
- EPA Office of Wetlands, Oceans and Watersheds
- Friends of Banshee Reeks
- Loudoun County Department of General Services
- Loudoun County Department of Solid Waste
- Loudoun County Environmental and Historic Resources Program
- Loudoun County Master Gardener
- Loudoun County Sanitation Authority
- Loudoun Soil and Water Conservation District
- Loudoun Watershed Watch
- Loudoun Wildlife Conservancy
- The Piedmont Environmental Council
- Virginia Department of Forestry

Acknowledgements

Loudoun Watershed Watch would like to thank The Loudoun County Public Library System and the Ashburn Farm Association for all their help and support for this event. Thanks also to the Broadlands HOA for their contributions.



The Loudoun Watershed Watch Presents

Exploring Our Streams!

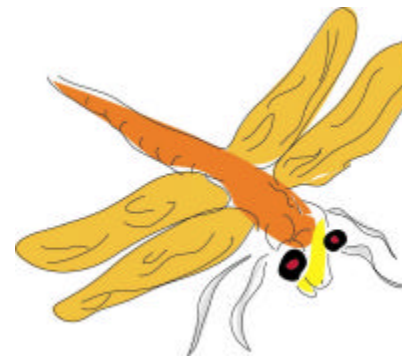
The 2nd Annual Family Stream Day

10:00 am to 3:00 pm

at

Ashburn Public Library

43316 Hay Road, Ashburn



Celebrating World Water Monitoring Day and the 31st birthday of the Clean Water Act!

Some Scheduled Events:

10 am Stream Clean Up

11 am Library Story Time

12 pm Awards Ceremony

Plus 8 **X-Stream-ly Awesome**

stream stations to visit all day long!

Visit us at www.loudounwatershedwatch.org

Station 1: Know Your Watershed & Exhibit Displays

Do you know your “watershed address?” Check out the watershed maps of Loudoun County and mark your address with a pin. Local streams carry part of our drinking water. Discover the many ways that county agencies and environmental groups are working to protect Loudoun’s streams. Pick up information on how you can help and get involved!

STAMP HERE

Station 2: Children’s Activities

Bugs in the Water

Come enjoy stream critter activities for kids, including games and a look at live stream critters. These amazing animals can help turn dead leaves into great blue herons and tell us about the health of our streams.

Dead leaves power the food web in local streams. A hidden world lies under the rocks in our streams. Stream creatures need your help to protect their homes.

STAMP HERE



Station 7: Stormwater Mapping

As required by EPA, Loudoun County is mapping storm sewers in eastern Loudoun County. The mapping includes field locating over 25,000 stormwater structures such as manholes, curb inlets and stormwater ponds. The stormwater inventory will enable the County to:

- Assist citizens when drainage or flooding occurs
- Develop a stormwater management plan to reduce pollutants
- Support maintenance and operations of the stormwater system
- Trace pollutants in streams back to their source

STAMP HERE

Station 8: Stream Buffers & Water Quality

Stream Buffers

Learn what a stream corridor is, that elusive RSCOD, and how important a streamside forest buffer is to the quality of a community’s water and the natural life of its urban stream corridors. See how planting nearly 300 native trees and shrubs this past April has improved the vitality of an important community stream corridor in the Broad Run watershed.

STAMP HERE

Water Quality

Aquatic insects live in streams under rocks and provide food for fish, turtles and frogs. Lots of insects mean a healthy stream. Loudoun Watershed Watch and its member organizations monitor aquatic insects and other water quality indicators throughout Loudoun County. Come see live aquatic insects and test for water quality. Learn how volunteers monitor streams and coordinate their results with county government and the Virginia Department of Environmental Quality.

Station 5: Soil and Water Conservation

Come view an Eagle Scout leadership service project by Scott Jackson. Scott's team planted over 100 trees, creating a vegetative buffer for the stream. The station will also have orientation information and a sign-up sheet for all boy scouts interested in pursuing the soil and water conservation merit badge.

STAMP HERE

Station 3: Urban Stormwater Retrofit

Come see a rip-rap drainage channel converted into a park! A primary feature of this project is a created stream system replicating one found in the Northern Virginia landscape. While the park is for the benefit of the community, numerous aspects of the 'retrofit' have been designed for improving water quality in the pond below it.

STAMP HERE

Station 6: Watch Your Waste

The most common and likely cause of water supply contamination comes from the daily, collective effects of thousands of well-meaning consumers who dispose of hazardous materials down their drains. Try your luck at the Watch Your Waste Card Game and learn which items are safe for the drain and which are not.

STAMP HERE

Station 4: Stream Protection

You will learn how landscape and gardening practices can support the protection of the watershed and environment. Examples include:

- Safe use of pesticides and fertilizers
- Soil preparation (soil test kits available)
- Plant/tree material selection for specific sites, emphasizing natives
- Proper plant installation and care (pruning)
- Benefits and value of trees

STAMP HERE

Also come see how the Loudoun County Department of Building and Development is protecting our streams by promoting conservation design, low impact development and effective erosion and sediment controls on construction sites.

Map of Site

