

Indoor Exhibitors (Community Center)

- Loudoun County Sanitation Authority
- Loudoun Watershed Watch
- Loudoun Wildlife Conservancy
- Piedmont Environmental Council
- Potomac Conservancy
- Potomac Watershed Partnership
- US Environmental Protect Agency

Outdoor Station Exhibitors

- Audubon Naturalist Society
- Boy Scouts of America
- Girl Scouts of the USA
- Loudoun County Sanitation Authority
- Loudoun Soil and Water Conservation District
- Loudoun Watershed Watch
- Loudoun Wildlife Conservancy
- Loudoun County Department of Solid Waste
- Loudoun County Department of General Services
- Potomac Conservancy
- St. Gabriel Laboratories
- Virginia Department of Forestry

Acknowledgements

Loudoun Watershed Watch would like to thank the Broadlands Nature Center for their help and support at this event. Thanks also to the **Lovettsville Lions Food Tent.**



Third Annual "Family Stream Day"

10:00 am to 3:00 pm

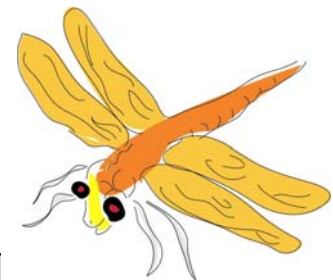
hosted at the

Broadlands Community Center
and Hillside Park

43004 Waxpool Road, Ashburn

*Celebrating World Water Monitoring Day and
the 32nd birthday of the Clean Water Act!*

Use this PASSPORT to
visit 10 *x-stream-ly awesome*
stations all day long!



Passport Holder's Name

Visit www.loudounwatershedwatch.org

Station 1: Your Watershed Address

by: Piedmont Environmental Council

www.pecva.org

Do you know your "watershed address?" Check out the watershed maps of Loudoun County and mark your address with a pin. Local streams carry part of our drinking water. Discover what can be done to protect Loudoun's streams. Pick up information on how you can help and get involved!



See Additional Exhibits and Displays Inside the Community Center Including: Posters from the contest

Stamp

Station 2: Get Nuts for Clean Water

by: Growing Native

www.growingnative.org

Help improve the health of the Potomac River...one acorn at a time.

It's fun for families, kids, and adults of all ages. Collect acorns and other native tree seeds for future streamside forests and healthier streams. Learn how you can collect at a public site or in your own backyard. Identify native trees and their seeds. Pick up a supply of collection bags or drop off seeds you've already collected. A few hours of your time can mean decades of improved health for our forests and waters. *Growing Native* is coordinated by the Potomac Conservancy, on behalf of the Potomac Watershed Partnership, and is sponsored by Ford and Lincoln-Mercury.



Stamp

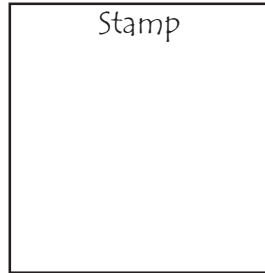
Site Map

Station 9: Stream Ecology

by: Loudoun Wildlife Conservancy
www.loudounwildlife.org

Aquatic insects live in streams under rocks and provide food for fish, turtles and frogs. Lots of insects mean a healthy stream. Loudoun Watershed Watch and its member organizations monitor aquatic insects and other water quality indicators throughout Loudoun County.

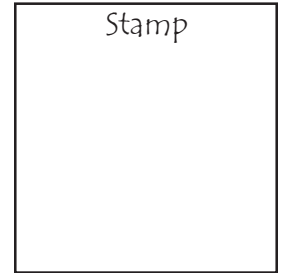
Come see live aquatic insects and test for water quality. Learn how volunteers monitor streams and coordinate their results with county government and the Virginia Department of Environmental Quality.



Station 3: Nature Crafts and Games

by: Audubon Naturalist Society – Rust Sanctuary
www.audubonnaturalist.org

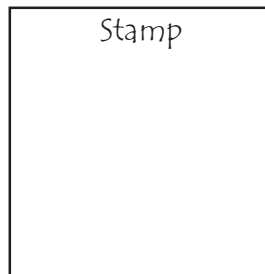
Come enjoy stream critter activities and crafts. Children of all ages can play water and stream games. Make a fantastic frog hat, create a popsicle dragonfly craft, play games to learn about the life styles of water insects.



Station 10: Fish and Forests

by: VA Dept. of Forestry and Loudoun Soil and Water Conservation District
www.vdof.org and www.loudoun.vaswcd.org

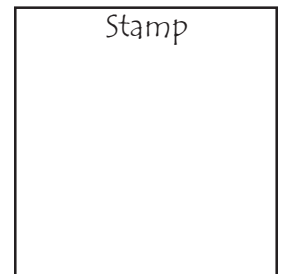
Learn how important a streamside forest buffer is to the quality of a community's water. Discover the natural life within the urban stream corridor. Identify local trees and shrubs and define their functions. Find out about the Riparian Buffer and how it works for you.



Station 4: Nature Walk

by: Loudoun Wildlife Conservancy
www.loudounwildlife.org

Take a short walk to explore nature in the forest and wetland area adjacent to the community center. Discuss the native and alien plants and animals that might be found in a wetland habitat. Find out how important they are and the impact they have on our water quality.



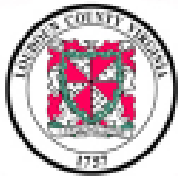
Station 5: Stormwater Tracking

by: Loudoun County Dept General Services
www.loudoun.gov/genserv/stormwater

On a large map, track and mark out the flow of rain water from your house and lawn through the storm drains and pipes down to the streams and towards the Potomac River. Find out how what is dumped in the storm sewers ends up in the Chesapeake Bay.

Develop a stormwater management plan to help your household reduce pollutants.

Find out how you can participate in a neighborhood storm drain marking program.



Stamp

Station 7: Smart Landscaping

by: the Broadlands HOA Habitat Team
hoa.broadlands.org

You will learn how landscape and gardening practices can support the protection of the watershed and environment.

Examples include:

- Safe use of pesticides and fertilizers
- Soil preparation (soil test kits available)
- Proper plant installation and care (pruning)
- Benefits and value of trees
- Plant and tree selection for specific sites, emphasizing natives

Don't know which plants are native to our area? Come check out our display.

BROADLANDS

Stamp

Station 6: Drain Dump Stumper

by: Loudoun County Sanitation Authority
www.lcsa.org

Are You Poisoning Your Water? Play the Drain Dump Stumper Game.

The most common and likely cause of water supply contamination comes from the daily, collective effects of thousands of well-meaning consumers who dump dangerous materials down their drains. Try your luck at the Drain Dump Stumper Card Game and learn which items are safe for the drain and which are not.

Stamp



Station 8: Conservation Awareness

Boy Scouts of America & Girl Scouts of the USA
www.boyscouts-nac.org and www.gscnc.org

Boy Scouts, Girl Scouts, Cub Scouts and Brownies all have requirements and community service activities relating to soil and water conservation. Look into potential conservation projects that you can be involved with in our area.

See the results of a recently completed Eagle Scout project that removed invasive plants from beside the stream.

Boys: sign up for the Soil and Water Conservation merit badge.

Girls: investigate the Watershed Patch.

Non scouts are welcome to participate.

Stamp