

Family Stream Day 2014

presented by:



Visit their web sites
www.loudounwatershedwatch.org
www.loudounnature.org

Poster, Prose & Photo Contest

Winners announced
at 12:30pm

Thank You! Soil & Water
Conservation District
for donating the prizes

Loudoun Environmental Stewardship Alliance
& Loudoun Watershed Watch

present an **X-Stream-ly
Awesome**
educational event for all



1 3th Annual FAMILY STREAM DAY

October 18, 2014
11 a.m. to 3 p.m.

Hosted by
Lyndora Park



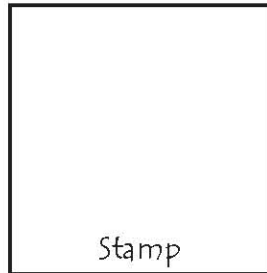
Passbook Owner's Name Here

Station 1: Your Watershed Address

by: Piedmont Environmental Council

www.pecva.org

What is a watershed? Do you know your "watershed address?" Check out the watershed maps of Loudoun County and mark your address with a pin. Local streams carry runoff to the Potomac River and Chesapeake Bay. Discover what you can do to protect Loudoun's streams. Pick up information on how you can help and get involved!



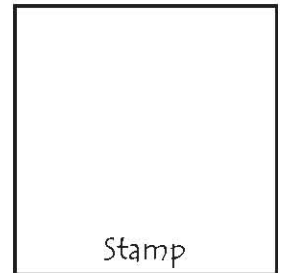
Station 9: Make Your Mark

by: Loudoun County, Department of
General Services, Storm Water Management

www.loudoun.gov/stormwater

Find out how you can let your neighbors know where the rain goes and that it's important not to throw or dump anything down the stormdrain. Stormdrains flow to our creeks, streams, rivers and the Chesapeake Bay. The Town of Leesburg and the Loudoun County Dept. of General Services have programs to help you mark stormdrains in your neighborhood with "Don't Dump, Drains to River" labels.

Come try your hand at the storm drain throw.

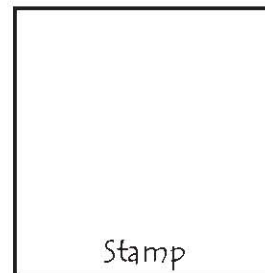


Station 10: Can the Grease

by: Loudoun Water

www.loudounwater.org

Are you Clogging Your Pipes? Sewer overflows and backups are commonly caused by fats, oil and grease (FOG). Grease gets into the sewer from household drains. The grease blocks sewer pipes, causing health hazards and leading to expensive repairs. It also damages the environment. Help keep your pipes and streams clean by creating FOG containers out of ordinary soup cans. Pick up a couple of grease bags to place inside your grease catchers.

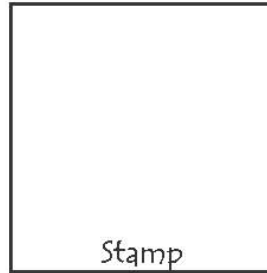
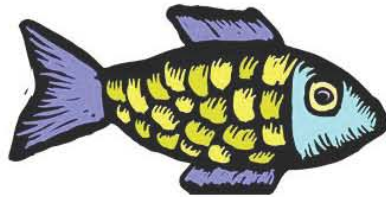


Station 7: Upper Broad Run

by: Loudoun County, Department of Building & Development, Water Resources Team

www.loudoun.gov/water

What is wrong with this picture? Take a close look and see if you can spot the problem. Does the stream look good?



Station 8: How Streams Move

by: Loudoun Watershed Watch

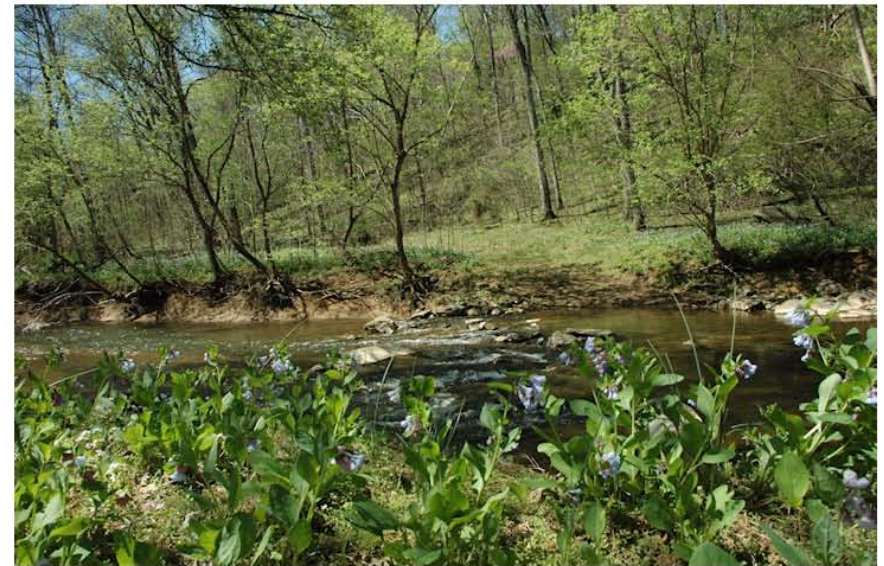
www.loudounwatershedwatch.org

Watch the streambed particles move in a scale model. See how sediments drop out in the turns and bends when the flow rate slows down. At high rates the stream jumps out of the banks in a flood.



Loudoun Environmental Stewardship Alliance
Visit our table for more information.

LESA is a voluntary coalition of individuals representing nonprofits, schools, governments and corporations with a common interest in environmental education and stewardship.

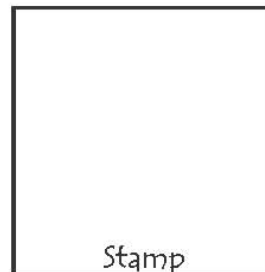


Station 2: Keeping Dirt in its Place

by: Loudoun County, Department of Building and Development, Erosion & Sediment Control Team

www.loudoun.gov/erosion

Sediment is the # 1 pollutant of surface water and greatly affects our water quality. An interactive town and farmland model allows participants to see how disturbances to land, by farming and new construction, cause large amounts of soil to run off into our creeks, rivers and the Chesapeake Bay destroying the fish, native vegetation and quality of the water.

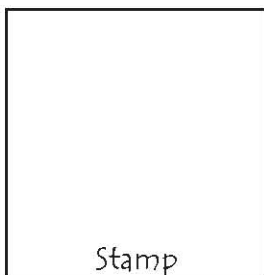


Station 3: Soil Erosion in a Bottle

by: Audubon Naturalist Society - Rust Sanctuary

www.audubonnaturalist.org

In this activity kids will use recycled materials to create their own erosion experiment and learn the concept of erosion caused runoff. We will also observe potential problems caused by water running over pervious and impervious surfaces.



Station 4: Make Your Own Watershed

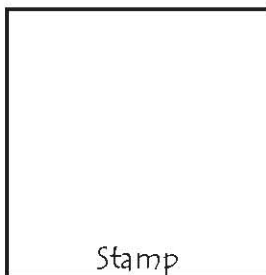
by: Claude Moore Park

www.loudoun.gov/claudemoorespark or 571-258-3700

Watersheds are the lands that collect the water when it rains and then drain into our streams, rivers and bays.

Make your own paper watershed model. Where should we build the schools, homes and stores? Discover how these decisions affect how clean our water can be.

"Riparian Geocache" and find a hidden treasure along the trail celebrating healthy waters and the life they support.



Station 5: Identify A Tree

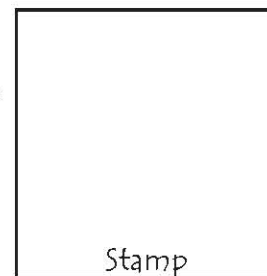
by: Loudoun County Master Gardeners Tree Steward Team

www.loudouncountymastergardeners.org

Maple, Sycamore, Pine, Birch: what do you have in your backyard? Play the tree leaf ID game and see what they tell you. Check out true/false tree facts and get all your tree questions answered. See how trees help produce healthy streams and good water quality by decreasing runoff and increasing stormwater filtration.



Many publications are available on topics such as: How to Plant Trees, Managing Winter Tree Injury, Trees for Wet & Dry Sites, Better Tree Choices for VA Landscapes.



Station 6: How Clean is this Stream?

by: Goose Creek Association

www.goosecreekassn.org

Water that looks clean may actually be polluted. Did you know clean water supports different "bugs" than polluted water does? View our samples of stream water, find the macroinvertebrates that are living in them to determine which water sample is cleaner. Learn what homeowners

can do to protect our streams and rivers.

