


## Watershed Regulations at the Local Scale

David Ward, Loudoun Watershed Watch



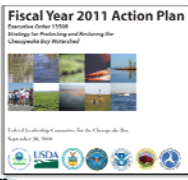
Presented at  
Goose Creek Association Forum  
March 9, 2011  
Middleburg, VA

### Watershed Regulations at the Local Scale

- ▶ Federal
  - Executive Order
- ▶ Regional
  - Chesapeake Bay Total Maximum Daily Load
- ▶ State
  - Stormwater
- ▶ County
  - Loudoun County consideration of voluntary adoption of ordinance based on Chesapeake Bay Preservation Act
  - Alternate Onsite Septic System inspections in Loudoun

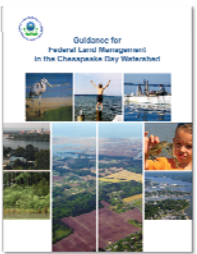
### Federal – Executive Order 13508 for Restoring the Chesapeake Bay

- ▶ EO Issued May 12, 2009
- ▶ Action Plan - Sept 2009
- ▶ Obligates \$490 million in 2011 towards Federal and State programs



Fiscal Year 2011 Action Plan  
Executive Order 13508  
Strategy for Restoring and Maintaining the Chesapeake Bay Watershed

↔




Guidance for Federal Land Management in the Chesapeake Bay Watershed

- ▶ Issued May 12, 2010
- ▶ Guidance for Federal Land Management (841 pages)
- ▶ Not a regulation

### Mount Weather

- ▶ In place of state stormwater regulations, federal government will manage stormwater
- ▶ “where technically and economically feasible”.



Western portion as viewed from the northeast (Google Map)


### Chesapeake Bay Total Maximum Daily Load

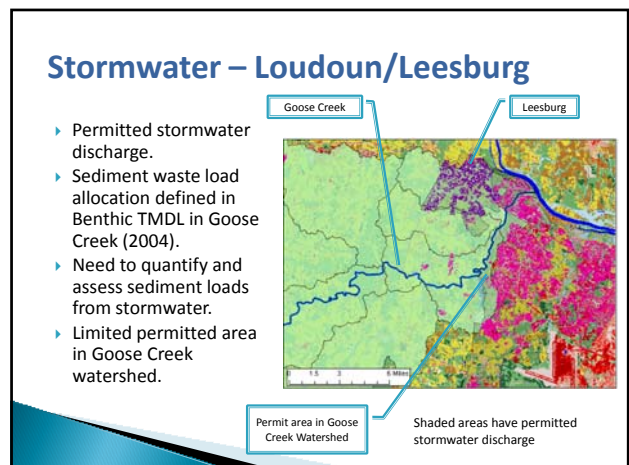
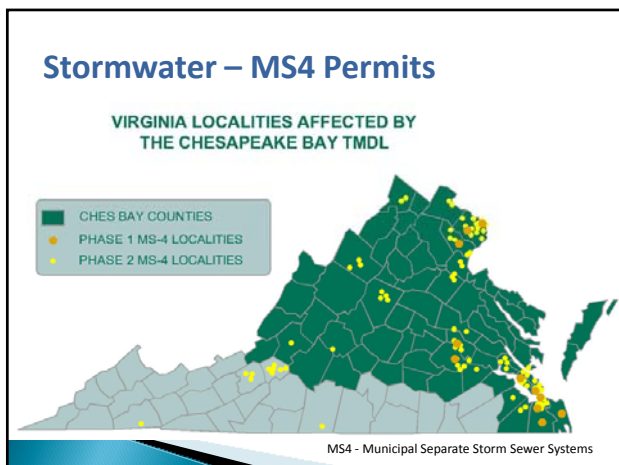
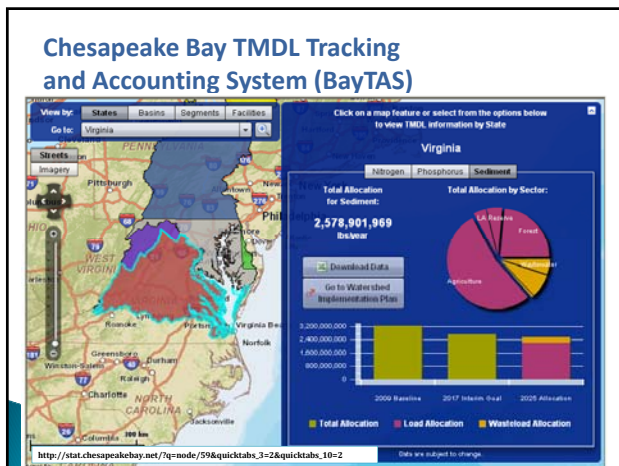
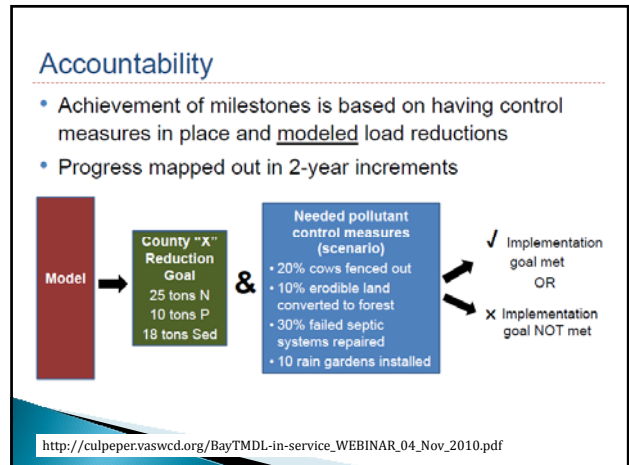
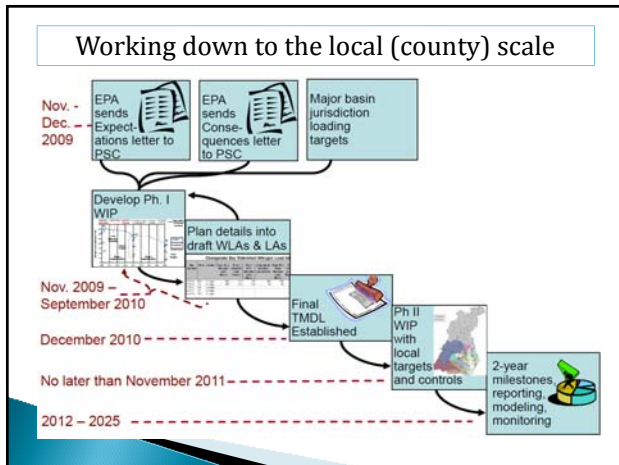
- ▶ “In December 2010, the U.S. Environmental Protection Agency established the Chesapeake Bay Total Maximum Daily Load (TMDL), a historic and comprehensive “pollution diet” with rigorous accountability measures to initiate sweeping actions to restore clean water in the Chesapeake Bay and the region’s streams, creeks and rivers.”
- ▶ So what’s the “diet” for Goose Creek?

### Goose Creek Watershed

- ▶ Chesapeake Bay
  - 64,000 sq miles
- ▶ Goose Creek
  - 386 sq miles

Contributes 0.6% of drainage to the bay





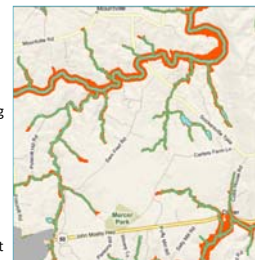
### Stormwater Permit Monitoring

- ▶ Loudoun County has monitored 45 of the 110 outfalls in the Goose Creek watershed:
- Dry weather screening showed that 69% of the Goose Creek outfalls have sediment evidence at the outfalls.
- Wet weather screening showed that 44% of the Goose Creek outfalls had significant turbidity present.



### Loudoun County Activities

- The River Stream Corridor Overlay District overturned in 2004 (red underlay in map).
- Board of Supervisors held two special Committee of the Whole meetings Dec. 2008 and Feb. 2009 specifically on water quality.
- Since Feb. 2009 County is considering adopting an ordinance based primarily on Chesapeake Bay Preservation Act (RPA in green).
- Loudoun has an improved water quality baseline to measure changes, especially important with Chesapeake Bay TMDL 2-year milestones now underway.
- County has adopted Limestone Overlay District in 2010.

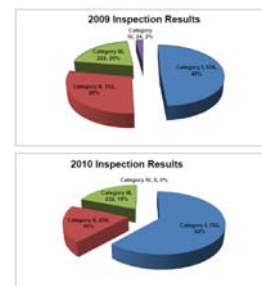


### Alternative Septic

- ▶ In 2002 initiated permitting Alternative Onsite Sewage Systems (AOSS).
- ▶ In Nov 2008 Loudoun County adopted Chapter 1067 that requires inspections of AOSS.
- ▶ In Apr 2009 the State enacted legislation denies localities the ability to restrict use of AOSS.
- ▶ In Jul 2009 the State requires maintenance (annual) of systems installed after July 1, 2009.
- ▶ In Apr 2010 Virginia Department of Health issued Emergency Regulations establish Operation and Maintenance requirements for all (existing and future) AOSS – performance based.

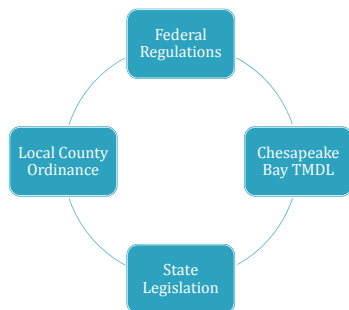
### Loudoun Inspections of AOSS

- ▶ As of Jan 2011, 1221 AOSS were inspected in Loudoun:



Alternative Onsite Sewage Systems (AOSS)

### Summary



END

David Ward  
info@loudounwatershedwatch.org