

Stewardship



Stream Restoration in Ashburn



Stream Restoration in Big Springs



Tree Planting near Catocin Creek



Stream Monitoring Demonstration



My name is Lou
(short for Loudoun) and I
am a dragonfly. I live in and
around healthy streams
and watersheds.

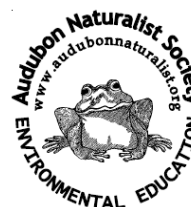


2007 Outstanding Organization Award from
Virginia Citizens for Water Quality

Participating Partners



GOOSE CREEK



www.LoudounWatershedWatch.org

info@loudounwatershedwatch.org



LWW is supported through all the partners in the consortium. LWW specifically acknowledges the generous contributions of Loudoun Wildlife Conservancy.

A CONSORTIUM OF CITIZEN GROUPS, LOCAL AND
STATE AUTHORITIES PROTECTING THE WATER
RESOURCES OF LOUDOUN COUNTY, VA

Loudoun Watershed Watch



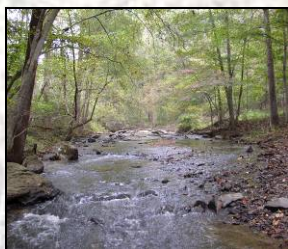
Loudoun Watershed Watch (LWW) was organized in 2000 by citizen groups and local authorities concerned about water quality and stream health in Loudoun County, Virginia. Its goal is to promote cooperative, countywide programs to monitor and protect the water resources of Loudoun County. LWW seeks to accomplish this through greater public awareness of watersheds and through citizen involvement in stream protection and restoration stewardship programs.

Loudoun Watershed Watch Goals

- Provide a forum for collaboration among citizen and county stakeholders.
- Compile water quality and stream health data and make it available to the public.
- Provide stream quality educational materials and stream stewardship projects.
- Promote good water quality and stream habitat protection and restoration.

Loudoun Watershed Watch Vision

LWW shares a common vision with citizens across the nation: clean and safe water, and healthy aquatic ecosystems. For citizens in Loudoun, this means a county distinguished for its meandering streams with forested stream (riparian) buffers flowing through woodlots, farms, residential communities, and parks with streamside trails.



Healthy Stream



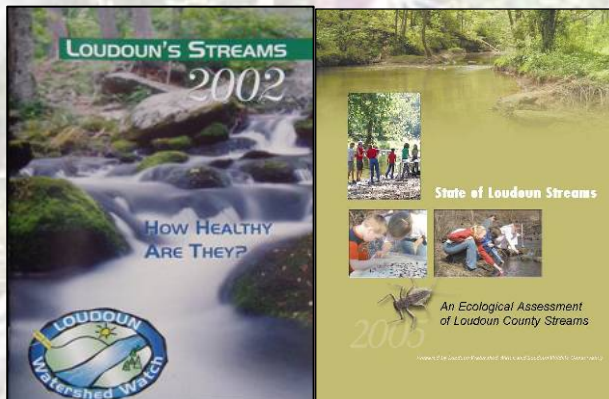
Degraded Stream

Stream Monitoring

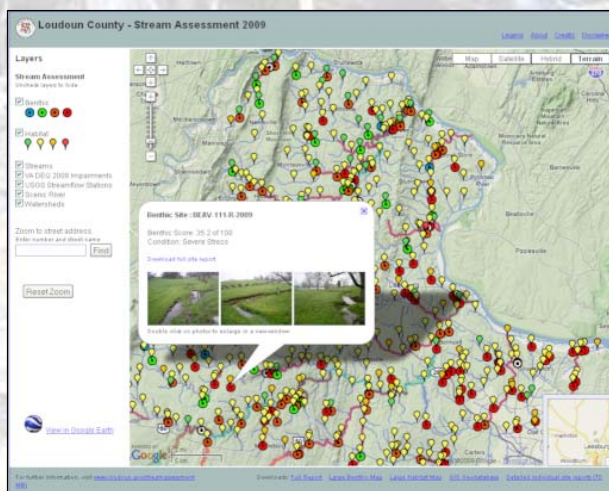
LWW partners monitor streams by measuring biological and physical parameters. These characteristics are used to assess the impact of land use on stream health. One method of assessment involves collecting, sorting and counting the benthic macroinvertebrate organisms living in the stream. The abundance and type of organisms collected determines the health of the stream.

Monitoring Data Compilation and Presentation

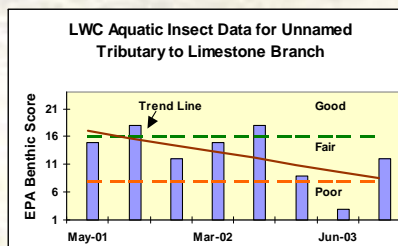
Stream monitoring data is a measure of the stream health, more specifically, the biological and chemical conditions in or near a stream. LWW compiles data from all partners and prepares reports such as “State of the Streams”.



Data from all partners are mapped and presented as static and interactive maps on the web site.



Over a period of several years a “trend” can be discerned.



Family Stream Day

Every October since 2002, LWW has sponsored “Family Stream Day”. This Saturday event is designed to provide an exploration of a local urban stream and a hands-on discovery of the relationship between urban stormwater management, stream health, and the many ways citizens can help their local stream environments.



Volunteering

Citizens are encouraged to participate in, and volunteer for, the events and programs created by the LWW member organizations. Activities include: presentations, stream walks, habitat restoration, stream monitoring, and training sessions in monitoring methods.

“X-Stream-ly awesome” educational map, crossword and puzzle, distributed to over 50,000 students.

