



Loudoun Watershed Watch
info@loudounwatershedwatch.org

April 20, 2018

Mr. Stuart Torbeck, Water Quality Data Liaison
Virginia Dept. of Environmental Quality
629 East Main Street
Richmond, VA 23219

Sent via E-mail: charles.torbeck@deq.virginia.gov

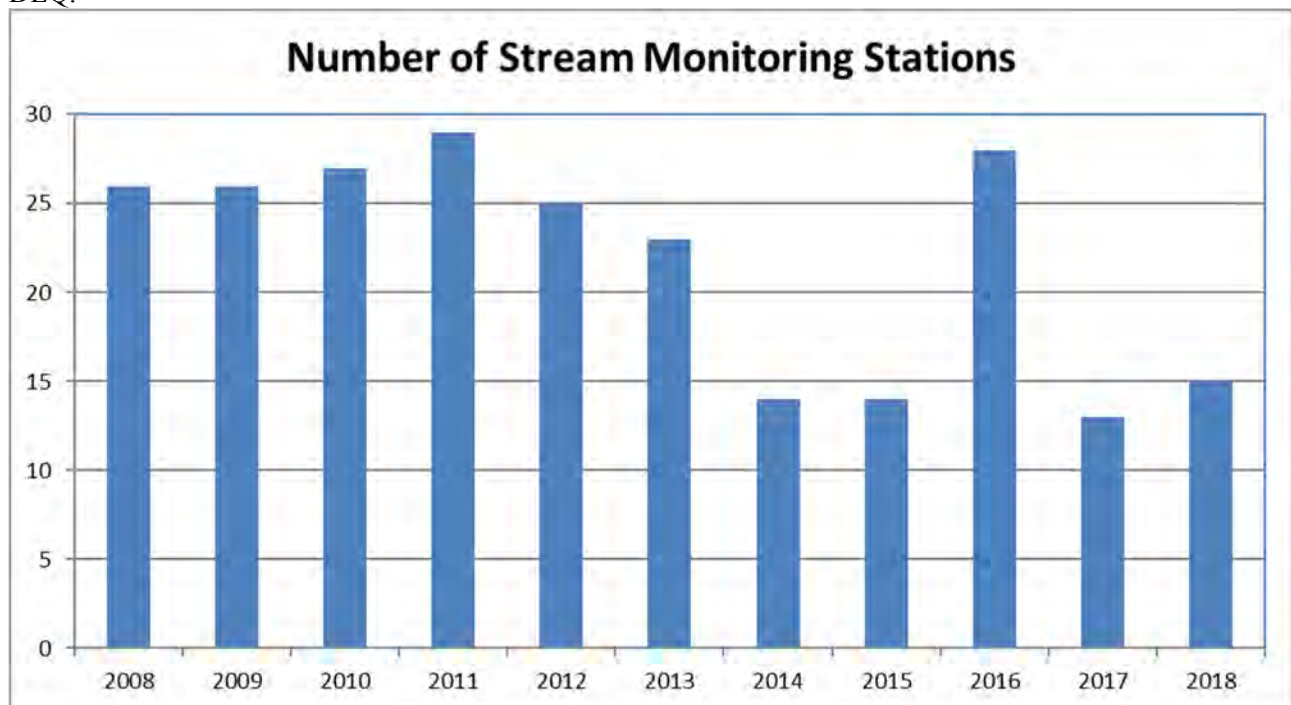
Subject: Citizen Nomination for Stream Monitoring

Dear Mr. Torbeck:

Loudoun Watershed Watch is pleased to provide several nominations for additional stream monitoring locations to be considered for inclusion in DEQ's Water Quality Monitoring plan for calendar year 2019.

We understand that while two of the four nominations submitted last April were accepted by DEQ, that because of staff changes, DEQ will not be able to address these sites in 2018. Therefore, we are again including these two sites in 2018 for monitoring in 2019.

The planned stations for CY2018 contains fifteen stations. We hope that CY2019 will be increased and closer to two dozen stations when the county may be more "in focus" with the rotating watershed approach used by DEQ.



We are aware that only about 30 percent of the stream miles in Loudoun County have been assessed for aquatic life use through benthic monitoring of the macroinvertebrate community in the streams. We understand that VA DEQ began stream monitoring in Loudoun County in 1994. Over the years the number in sites has grown to about a dozen sites wherein a site is typically monitored in both the spring and fall as VA DEQ requires that two benthic sampling be conducted to be included in the water quality assessment. The site locations change around as DEQ seeks to maximize coverage and, in part, because of previous site nominations submitted by Loudoun Watershed Watch.

We utilized the state EDAS Family and Genus MS Access files with data available through Fall 2016. The “ProbMon” DEQ data files were posted in March 2017. The Genus-level data began in 2012 and typically includes duplicate results which we have averaged. We chose to aggregate data for each station for each sampling period (spring and fall) into one score. We include the 2010 to 2016 “average” SCI score in the attached maps. We have also used the comprehensive DEQ-approved Loudoun County Stream assessment, conducted in the spring of 2009 (<http://www.loudoun.gov/streamassessment>). This provides high-quality results using DEQ-approved protocol for 200 locations.

Additionally, in recent years two active partners of Loudoun Watershed Watch, specifically Loudoun Wildlife Conservancy and Goose Creek Association have provided additional locations and multi-year benthic assessments (2008-2016). Based on the benthic assessments, as well as the habitat assessments, we have assembled a series of priority site nominations as attached.

The goal of our site nominations is to suggest stream reaches that in our opinion are strategic to support identification of both “healthy” and potentially “impaired” (for aquatic life use) segments. Based on the 2009 Loudoun County stream assessment, 78% of the streams are statistically under stress or severe stress and would be designated as impaired, however, even with 200 monitoring events from the spring of 2009, this comprehensive survey does not provide sufficient coverage of all streams in Loudoun as the goal of the study was an overall assessment and was not designed to analyze each and every segment. Furthermore, the sampling was a one-time event and VA DEQ requires at least two events during the sampling window of the assessment cycle.

Regarding bacteria monitoring, we are not nominating any additional sites as we recognize that there is a high probability (80-90 percent) that streams within Loudoun County if sufficiently monitored would probably fail to meet the recreational use criteria established by VA DEQ.

Attached are sites that we believe are priority locations for benthic monitoring in CY 2019. The nominated stream reaches include:

1. Dog Branch
2. Milltown Creek

We look forward to your response and continued efforts to evaluate stream health in Loudoun County.

Sincerely,
Loudoun Watershed Watch

REQUEST TO INCLUDE A WATER SEGMENT IN DEQ'S ANNUAL MONITORING PLAN

Name: Loudoun Watershed Watch Date: April 20, 2018

Mailing Address: _____
Street

City: _____ State: VA Zip: _____

E-mail address: info@loudounwatershedwatch.org

Telephone: Home: _____ Business: _____ Fax: _____

Geographic description of the water body:

(1) Name of the water body or segment proposed for monitoring:

Dog Branch

(2) Description of the upstream and downstream boundaries of the water body proposed for monitoring. Attach a map (preferably a photocopy of a 7.5 minute quad USGS topographic map) which delineates the boundaries:

Dog Branch is a tributary to Beaverdam Creek which flows to Goose Creek. The area is rural farmland.

(3) Reason for requesting that this water body be monitored:

There has not been citizen monitoring on Dog Branch. The 2009 stream assessment indicates benthic conditions may vary from "Excellent" to "Stress".

(4) Attach any water quality data that you have collected or compiled. Include the name of the organization/entity that generated the data.

Data, reports, maps, presentations and animations are presented at www.loudounwatershedwatch.org and www.loudounwatershed.org

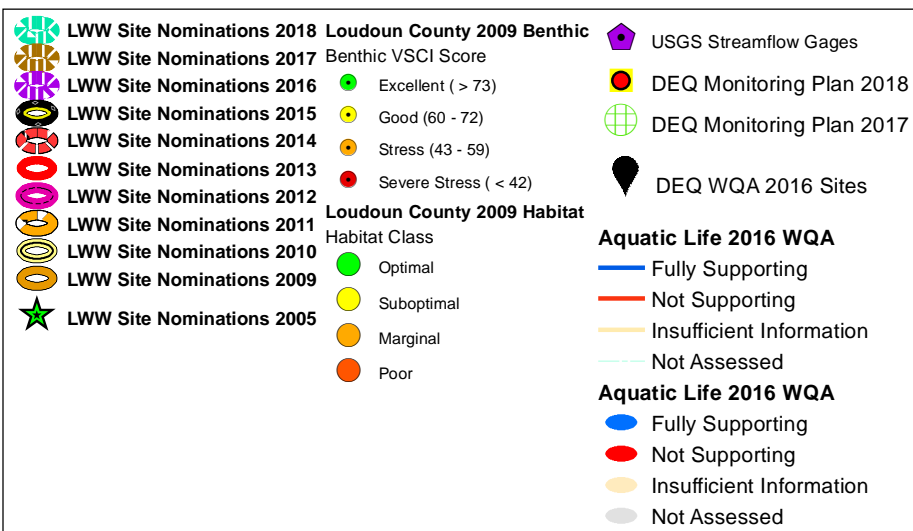
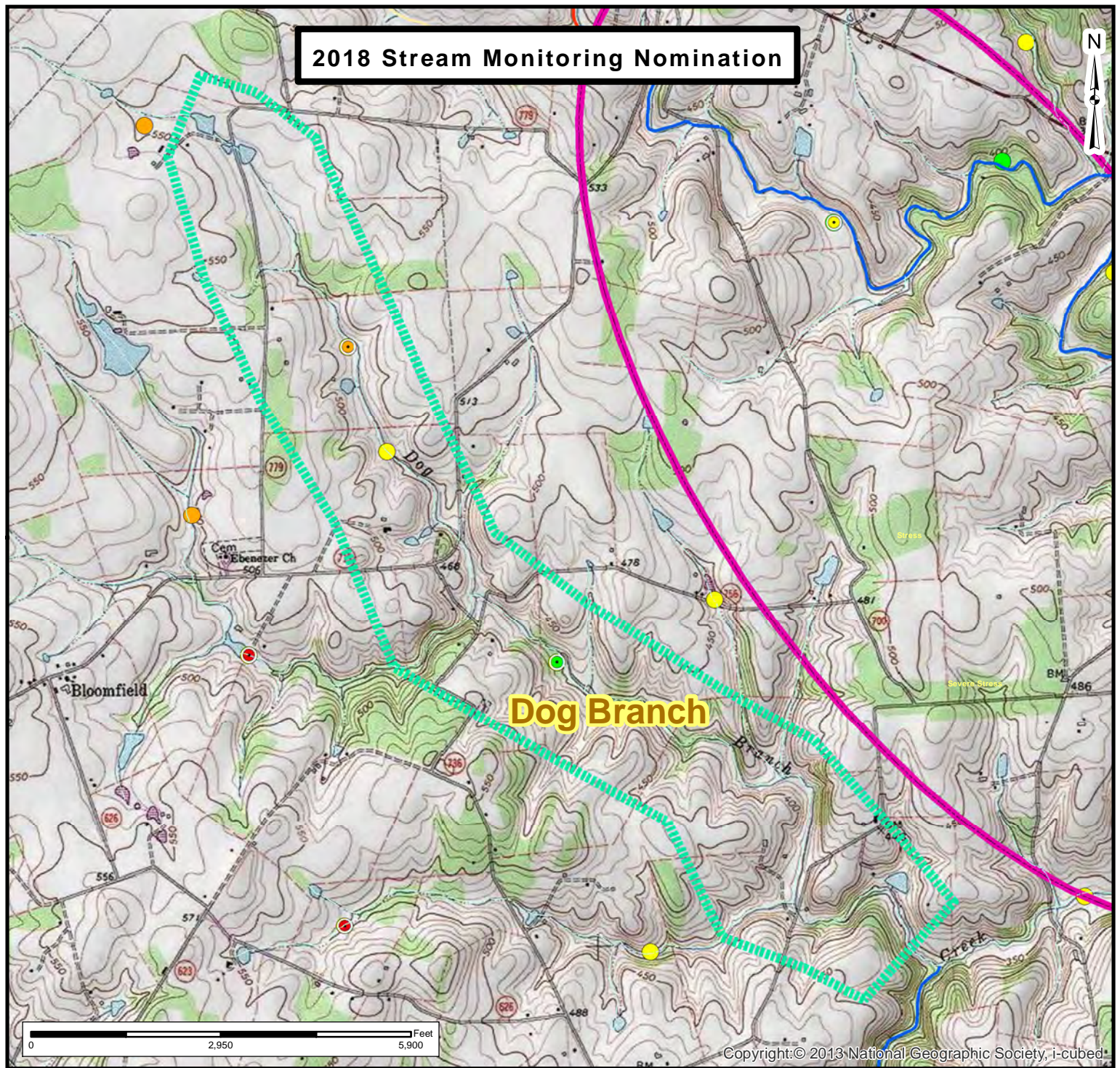
Additional reports and interactive maps of 2009 comprehensive field surveys are presented at www.loudounwatershedwatch.org/maps.



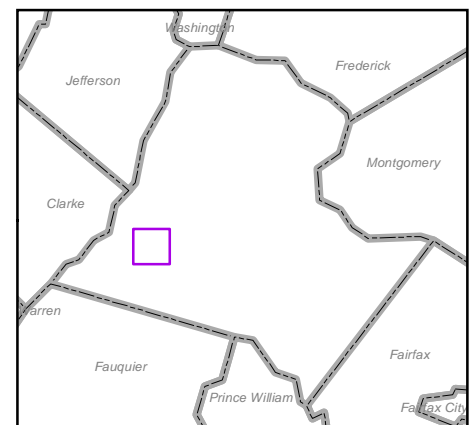
http://www.loudounwatershed.org/stream_assessment/gis/photos/benthic_habitat/BEAV-220-R-2009-1.jpg



http://www.loudounwatershed.org/stream_assessment/gis/photos/benthic_habitat/BEAV-221-R-2009-1.jpg



Dog Branch



REQUEST TO INCLUDE A WATER SEGMENT IN DEQ'S ANNUAL MONITORING PLAN

Name: Loudoun Watershed Watch Date: April 20, 2018

Mailing Address: _____
Street

City: _____ State: VA Zip: _____

E-mail address: info@loudounwatershedwatch.org

Telephone: Home: _____ Business: _____ Fax: _____

Geographic description of the water body:

(1) Name of the water body or segment proposed for monitoring:

Milltown Creek

(2) Description of the upstream and downstream boundaries of the water body proposed for monitoring. Attach a map (preferably a photocopy of a 7.5 minute quad USGS topographic map) which delineates the boundaries:

Milltown Creek flows eastward to Catoctin Creek, a State-designated Scenic River.

(3) Reason for requesting that this water body be monitored:

Milltown Creek has been the focus of citizen monitoring since 2000. There has been rural housing development constructed in the area since then. The creek has had beaver colonies come and go. It is appropriate for DEQ to establish a baseline benthic assessment for the creek.

(4) Attach any water quality data that you have collected or compiled. Include the name of the organization/entity that generated the data.

Data, reports, maps, presentations and animations are presented at www.loudounwatershedwatch.org and www.loudounwatershed.org

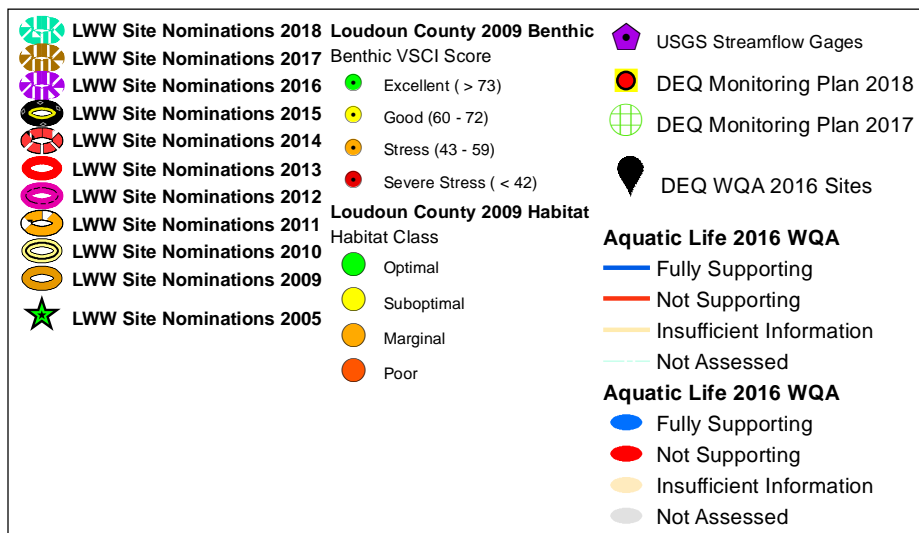
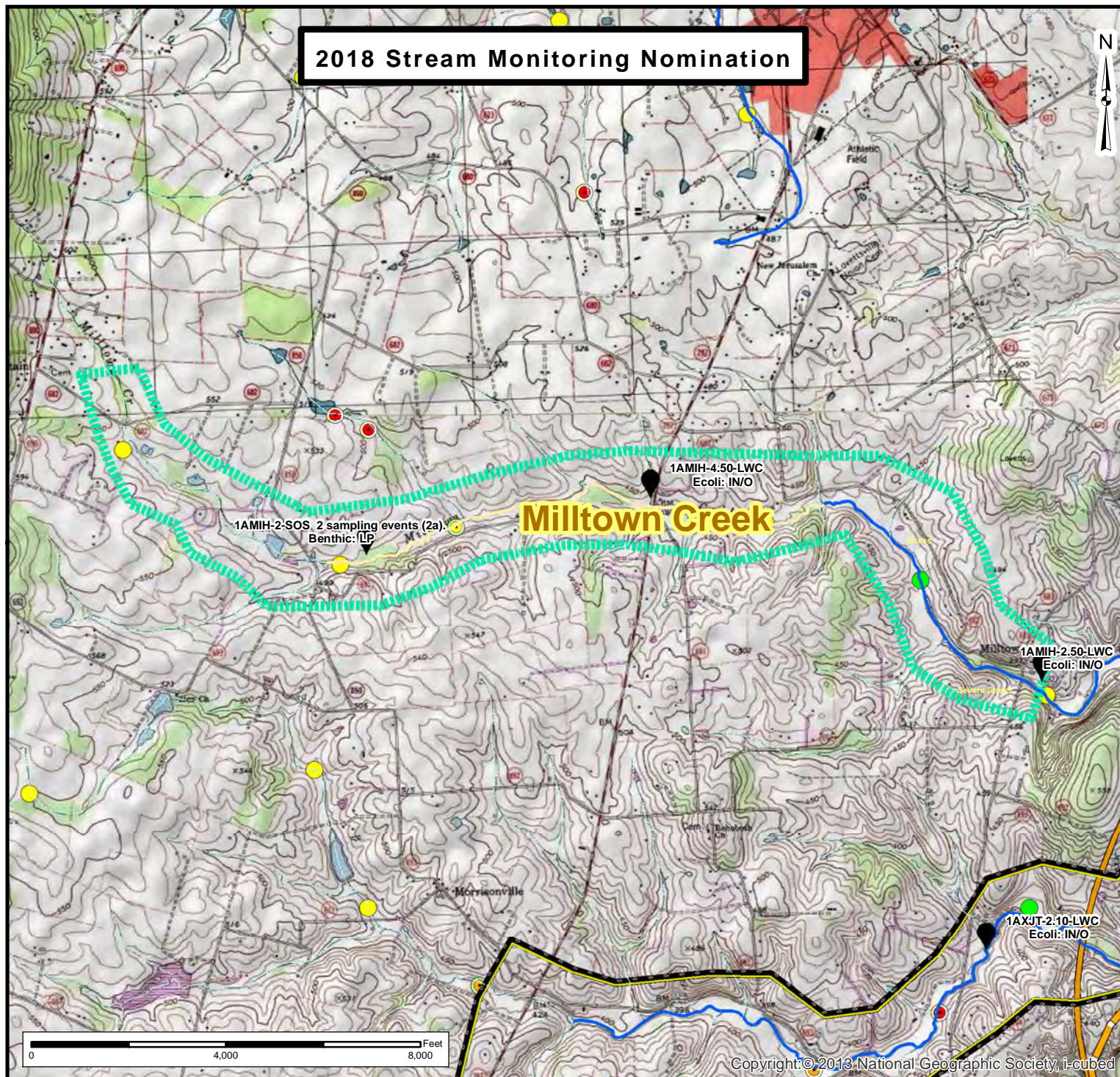
Additional reports and interactive maps of 2009 comprehensive field surveys are presented at www.loudounwatershedwatch.org/maps.



http://www.loudounwatershed.org/stream_assessment/gis/photos/benthic_habitat/CATO-219-R-2009-2.jpg



http://www.loudounwatershed.org/stream_assessment/gis/photos/benthic_habitat/CATO-207-H-2009-2.jpg



Milltown Creek

